

DESIGNER SURFACES | 2021 COLLECTION

Large Format Porcelain Slabs

www.designersurfaces.net.au

DESIGNER
SURF
ACES
BY ACM



CONTENTS

- 05 — Calacatta Gold
- 07 — Statuarietto
- 09 — Macchia Vecchia
- 11 — Absolute White
- 13 — Statuario Lux
- 15 — Concrete Light Grey
- 17 — Pietra Grey
- 19 — Cardoso Grey
- 21 — Metaline Iron
- 23 — Belvedere Black
- 25 — Sahara Noir
- 27 — Navona Honey Vein
- 29 — Grey Amani
- 31 — Varenna Carrara
- 33 — Metaline Corten
- 35 — Bianco Lasa
- 37 — Technical Information



Pietra Grey



Absolute White



Grey Amani



Calacatta Gold



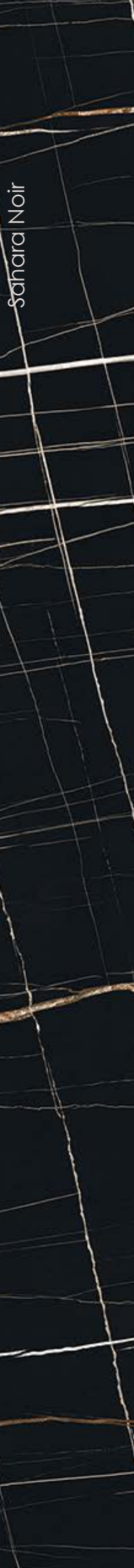
Belvedere Black



Concrete Light Grey



Statuarietto



Sahara Noir



Statuario Lux



Metaline Corten



Varena Carrara



Metaline Iron



Macchia Vecchia



Navona Honey Vein



Bianco Lasa



Cardoso Grey

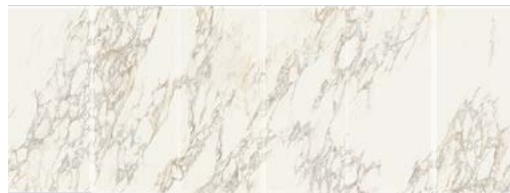
Calacatta Gold



Italian Porcelain



	3200x1600x12mm	2800x1200x6mm
Polished	●	●
Matte	●	●

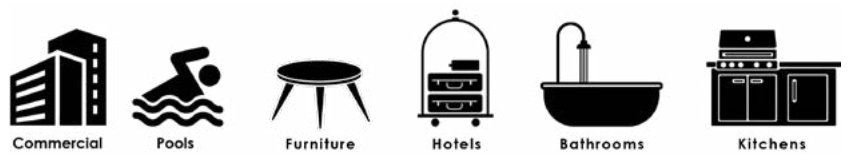


2800x1200x6mm

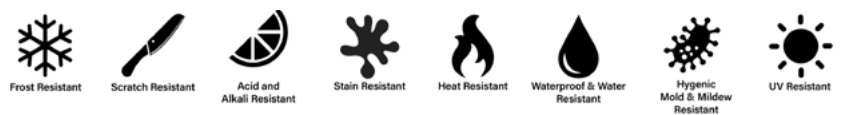


3200x1600x12mm

Applications



Technical Characteristics





Statuarietto

Italian Porcelain



V3 - HIGH

3200x1600x12mm 2800x1200x6mm

Polished



Matte



○ Available to Order

Applications



Technical Characteristics



7



Macchia Vecchia



Italian Porcelain



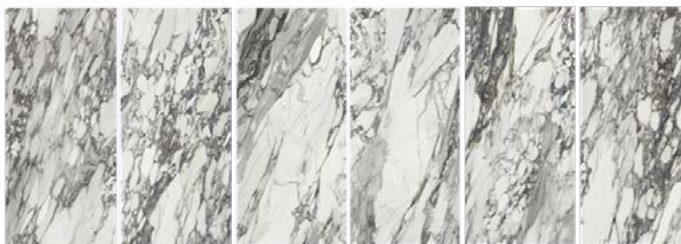
V3 - HIGH

3200x1600x12mm 2800x1200x6mm

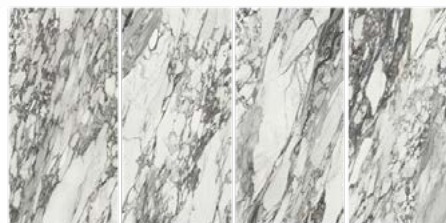
Polished



Matte



2800x1200x6mm



3200x1600x12mm

Applications



Commercial



Pools



Furniture



Hotels



Bathrooms



Kitchens

Technical Characteristics



Frost Resistant



Scratch Resistant



Acid and Alkali Resistant



Stain Resistant



Heat Resistant



Waterproof & Water Resistant



Hygienic Mold & Mildew Resistant



UV Resistant

9



Absolute White



Italian Porcelain



V1 - LOW

	3200x1600x12mm	2800x1200x6mm
Polished		
Matte		

○ Available to Order

Applications



Commercial



Pools



Furniture



Hotels



Bathrooms



Kitchens

Technical Characteristics



Frost Resistant



Scratch Resistant



Acid and Alkali Resistant



Stain Resistant



Heat Resistant



Waterproof & Water Resistant



Hygienic Mold & Mildew Resistant



UV Resistant

11



Statuario Lux

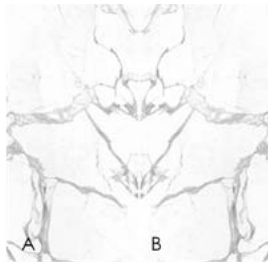


Italian Porcelain



	3200x1600x12mm	2800x1200x6mm
Polished	●	●
Matte	●	○

○ Available to Order



3200x1600x12mm



2800x1200x6mm

Applications



Technical Characteristics





Concrete Light Grey

Italian Porcelain



V2 - MODERATE

3200x1600x12mm 2800x1200x6mm

Polished

Matte

●	

Applications



Commercial



Pools



Furniture



Hotels



Bathrooms



Kitchens

Technical Characteristics



Frost Resistant



Scratch Resistant



Acid and Alkali Resistant



Stain Resistant



Heat Resistant



Waterproof & Water Resistant



Hygienic Mold & Mildew Resistant



UV Resistant

15



Pietra Grey



Italian Porcelain



V2 - MODERATE

3200x1600x12mm 2800x1200x6mm

Polished



Matte



○ Available to Order

Applications



Commercial



Pools



Furniture



Hotels



Bathrooms



Kitchens

Technical Characteristics



Frost Resistant



Scratch Resistant



Acid and Alkali Resistant



Stain Resistant



Heat Resistant



Waterproof & Water Resistant



Hygienic Mold & Mildew Resistant

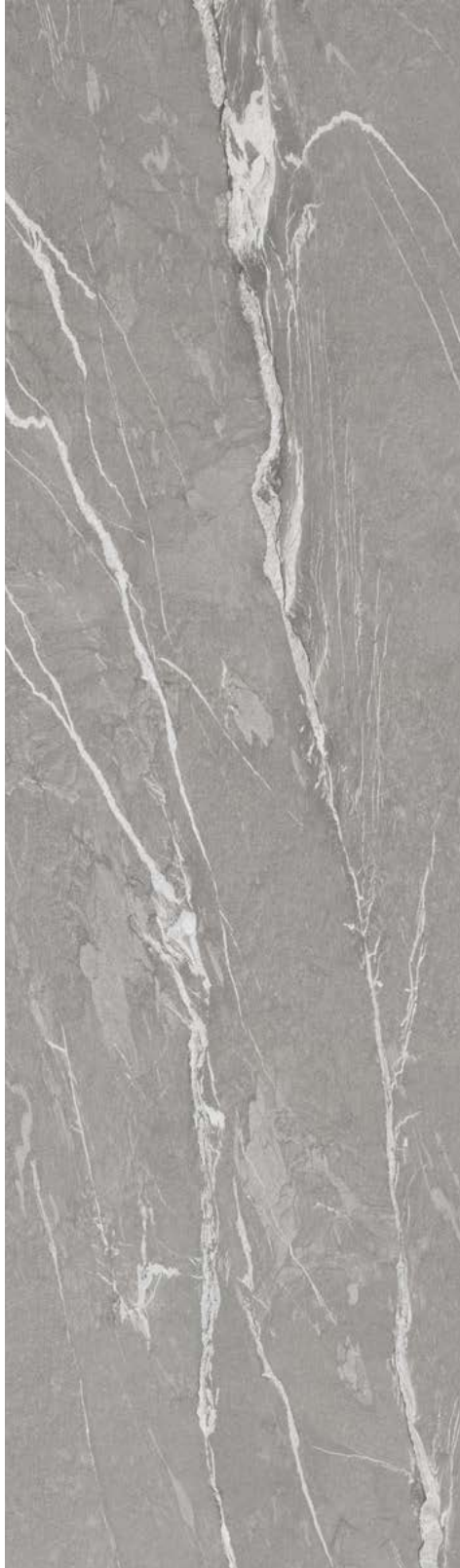


UV Resistant

17



Cardoso Grey

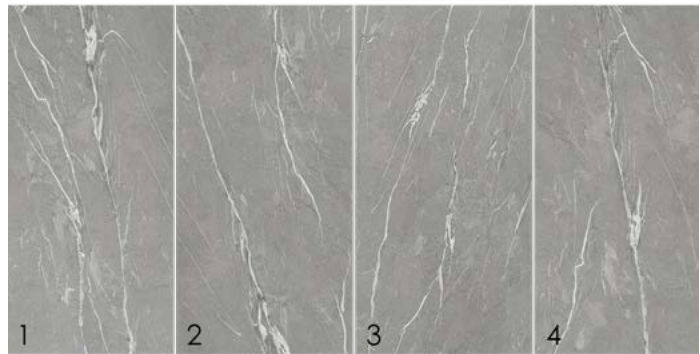


Spanish Porcelain



V2 - MODERATE

	3200x1600x12mm	2800x1200x6mm
Polished		
Matte	●	



3200x1600x12mm

Applications



Commercial



Pools



Furniture



Hotels



Bathrooms



Kitchens

Technical Characteristics



Frost Resistant



Scratch Resistant



Acid and Alkali Resistant



Stain Resistant



Heat Resistant



Waterproof & Water Resistant



Hygienic Mold & Mildew Resistant



UV Resistant

19



Metaline Iron



Italian Porcelain



V2 - MODERATE

3200x1600x12mm 2800x1200x6mm

Polished

Matte

●	

Applications



Commercial



Pools



Furniture



Hotels



Bathrooms



Kitchens

Technical Characteristics



Frost Resistant



Scratch Resistant



Acid and Alkali Resistant



Stain Resistant



Heat Resistant



Waterproof & Water Resistant

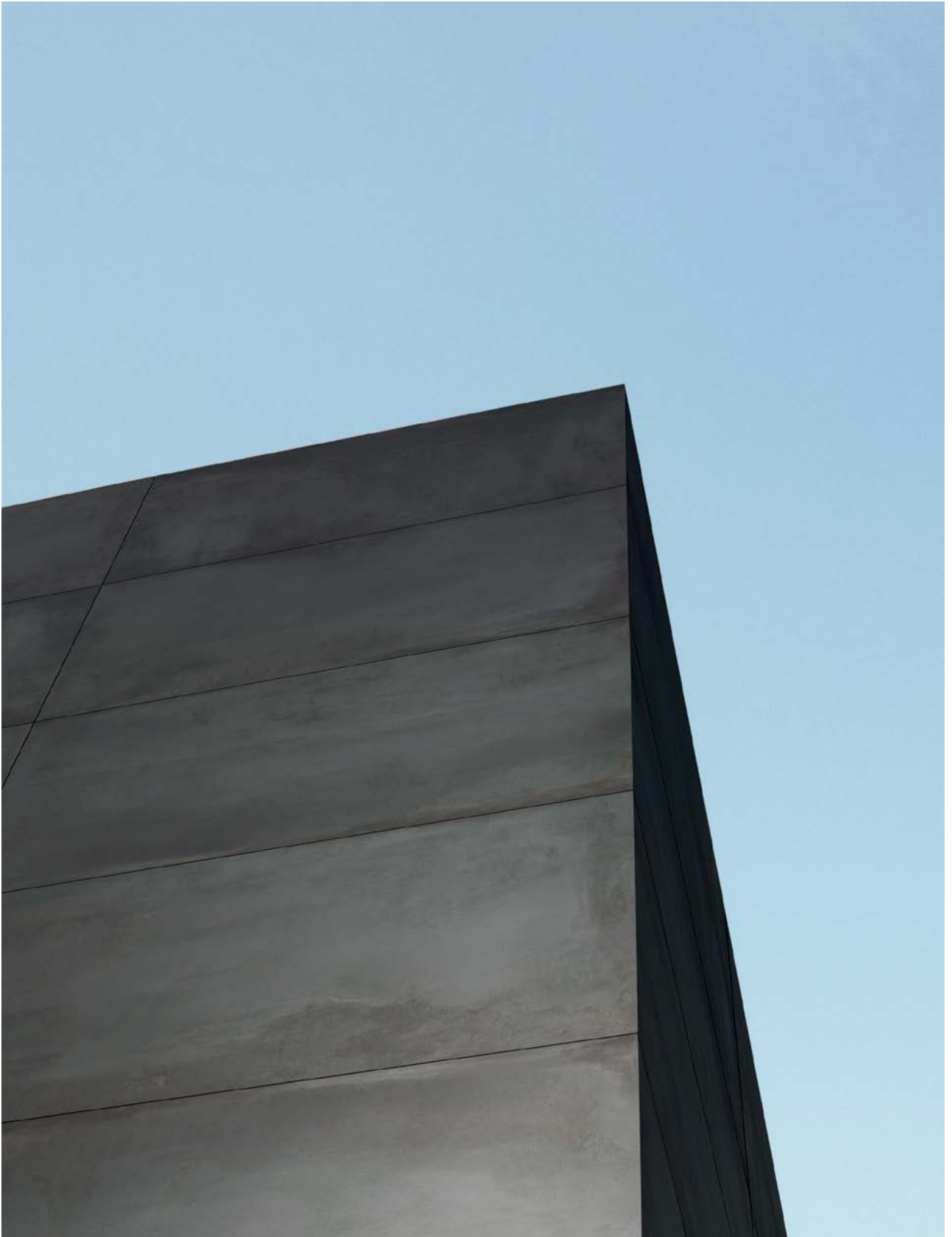


Hygienic Mold & Mildew Resistant



UV Resistant

21



Belvedere Black

Spanish Porcelain



V3 - HIGH



3200x1600x12mm 2800x1200x6mm

Polished



Matte



3200x1600x12mm

Applications



Commercial



Pools



Furniture



Hotels



Bathrooms



Kitchens

Technical Characteristics



Frost Resistant



Scratch Resistant



Acid and Alkali Resistant



Stain Resistant



Heat Resistant



Waterproof & Water Resistant

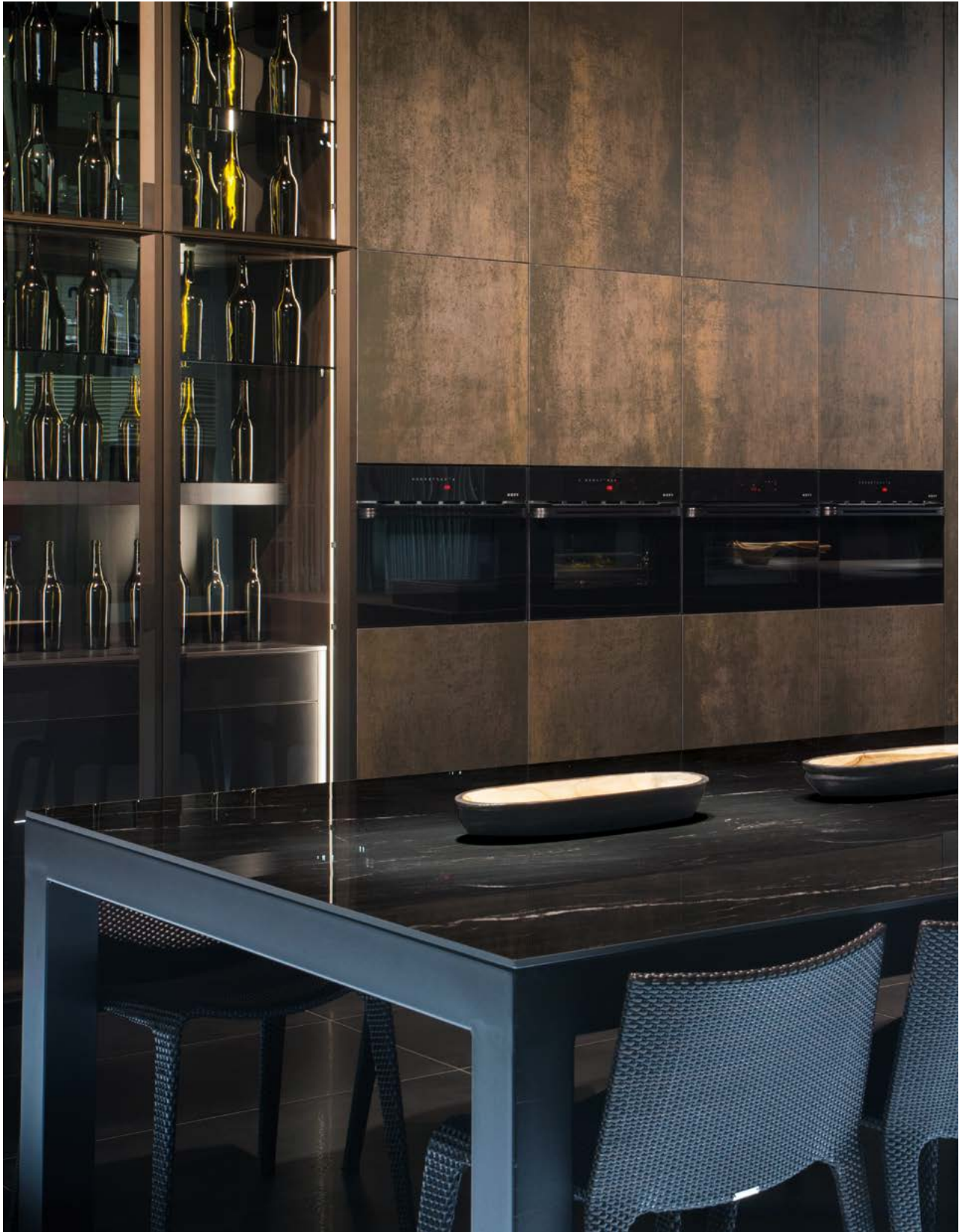


Hygienic Mold & Mildew Resistant



UV Resistant

23



Sahara Noir



Italian Porcelain



V2 - MODERATE

3200x1600x12mm 2800x1200x6mm

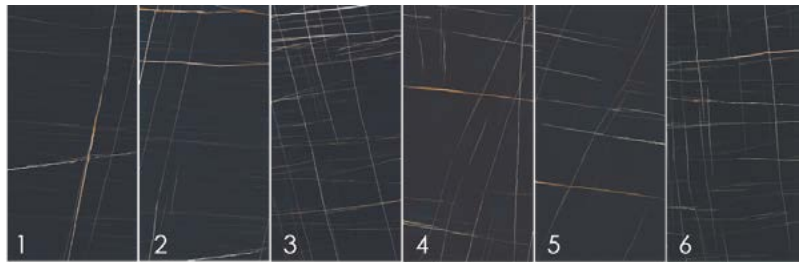
Polished



Matte



○ Available to Order



2800x1200x6mm

Applications



Commercial



Pools



Furniture



Hotels



Bathrooms



Kitchens

Technical Characteristics



Frost Resistant



Scratch Resistant



Acid and Alkali Resistant



Stain Resistant



Heat Resistant



Waterproof & Water Resistant



Hygienic Mold & Mildew Resistant



UV Resistant

25



Navona Honey Vein

Italian Porcelain



V2 - MODERATE

	3200x1600x12mm	2800x1200x6mm
Polished		
Matte		●

Applications



Commercial



Pools



Furniture



Hotels



Bathrooms



Kitchens

Technical Characteristics



Frost Resistant



Scratch Resistant



Acid and Alkali Resistant



Stain Resistant



Heat Resistant



Waterproof & Water Resistant



Hygienic Mold & Mildew Resistant



UV Resistant



Grey Amani



Italian Porcelain

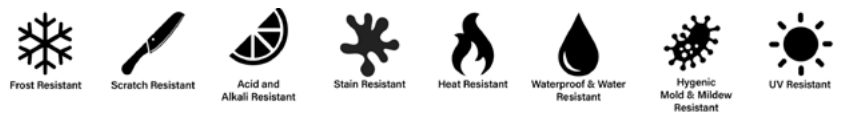


	3200x1600x12mm	2800x1200x6mm
Polished		●
Matte		

Applications



Technical Characteristics





Varenna Carrara



Spanish Porcelain



V2 - MODERATE

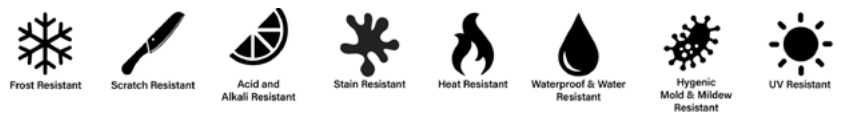
	3200x1600x12mm	2600x1200x6mm
Polished		●
Matte		



Applications



Technical Characteristics



31



Metaline Corten



Italian Porcelain



V2 - MODERATE

	3200x1600x12mm	2800x1200x6mm
Polished		
Matte		●

Applications



Commercial



Pools



Furniture



Hotels



Bathrooms



Kitchens

Technical Characteristics



Frost Resistant



Scratch Resistant



Acid and Alkali Resistant



Stain Resistant



Heat Resistant



Waterproof & Water Resistant



Hygienic Mold & Mildew Resistant



UV Resistant

33



Bianco Lasa



Italian Porcelain



V2 - MODERATE

3200x1600x12mm

2800x1200x6mm

Polished



Matte



2800x1200x6mm

Applications



Commercial



Pools



Furniture



Hotels



Bathrooms



Kitchens

Technical Characteristics



Frost Resistant



Scratch Resistant



Acid and Alkali Resistant



Stain Resistant



Heat Resistant



Waterproof & Water Resistant



Hygienic Mold & Mildew Resistant



UV Resistant

35



Edge Profiles

Porcelain stoneware offers a wide variety of colours and styles but it also provides the opportunity for different edge profiles. These profiles are available for custom cut-to-size requests, kitchen countertops, step systems and shelving.

Below are the available Edge Profiles possible with porcelain.



Arris Edge
Squared straight edge



Pencil Round
Rounded straight edge



Mitered Pencil Round
Rounded L-shaped edge



Double Arris Edge
Squared double straight edge



Mitered Arris Edge
L-shaped square edge



Double Pencil Round
Rounded straight double edge



Technical Characteristics

Porcelain stoneware is a ceramic material characterised by its high degree of compactness and it is from precisely this factor that its most important quality is derived.

Its composition results in its high resistance to impacts and stressors; Therefore wear, which makes it particularly suitable as a material for cladding facades, flooring in high-traffic areas, and outdoor settings.



Frost Resistant



Scratch Resistant



Acid and Alkali Resistant



Stain Resistant



Heat Resistant



Waterproof & Water Resistant



Hygienic Mold & Mildew Resistant



UV Resistant

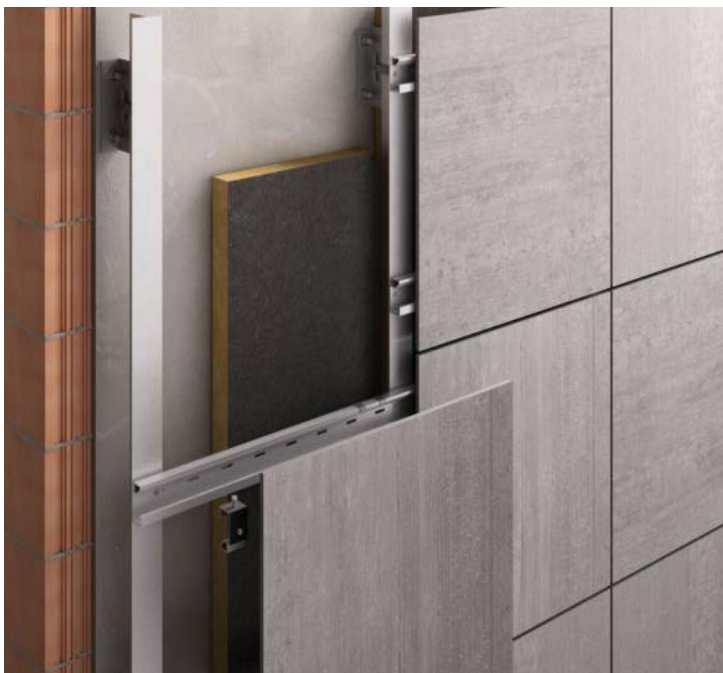
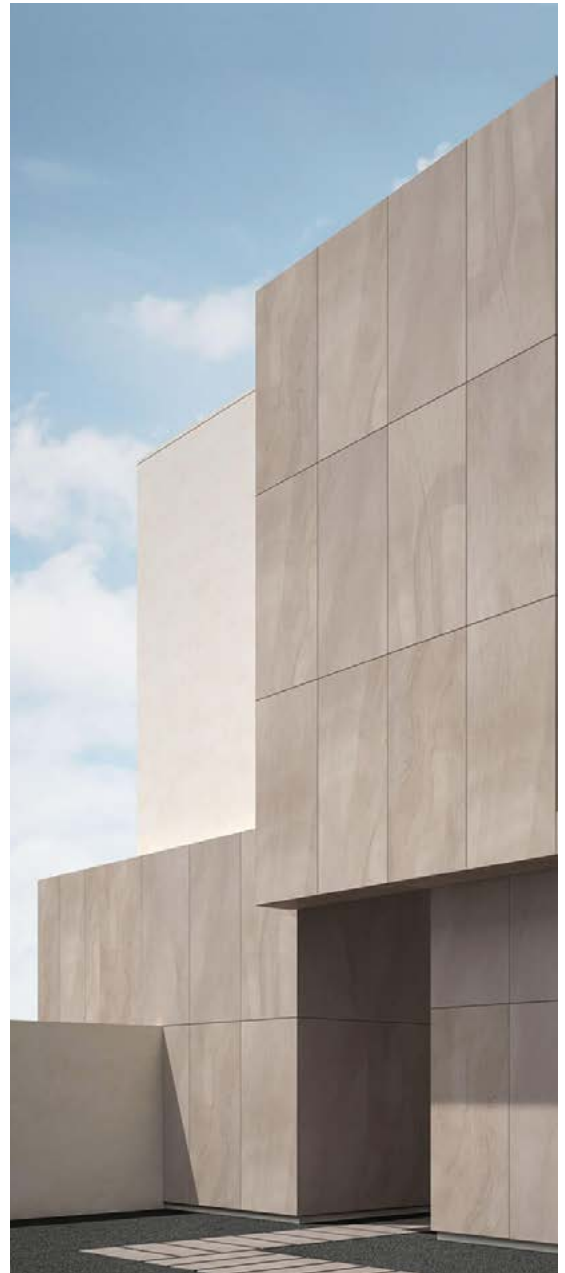
Ventilated Facades

To understand the potential benefits of a ventilated facade it is important to understand the fundamental concepts behind the system.

At its most basic, a ventilated facade system consists two layers of different facades which are separated by an air cavity. This cavity prevents rainwater from penetrating and diffuses water vapour from the inside to the outside.

While the external cladding serves to provide the majority of rain and wind protection, the air corridor between the support structure and the external cladding plays a major role in the ventilated facade system.

Designer Surfaces offers project support upon request for ventiaalted facades.



Care & Maintenance

If the product requires extraordinary cleaning due to particularly stubborn stains, action should be taken as soon as possible, using the specific detergents recommended in the table below:

Stain For Removal	Type of Detergent	Recommended Cleaner
Oil & Grease	Alkaline Cleaners	FILAPS87
Beer		
Chewing Gum		
Vinyl Glue		
Tyre Marks		
Silicone	Alkaline Stain-Removers or Solvents	FILAZERO SIL
Polyurethane Foam		
Adhesive Tape Residue		
Wax Pastel Marks		
Ink	Alkaline Stain-Removers or Solvents	FILAPS87 - FILASR95
Nicotine		
Urine & Vomit		
Marker Pen Stains		
Hair Dye		
Coffee		
Wine		
Blood		
Coca Cola		
Suction-Cup Marks		
Rust	Alkaline Cleaners or Acid Descaler	DETERDEK - FILANO RUST
Cement-Saltpetre	Alkaline Cleaners or Acid Descaler	DETERDEK - FILAPH ZERO
Limescale		
Aluminium & Metal Marks		
Pencil		
Epoxy Filler	Alkaline Cleaners	FILACR10
Varnish/Paint	Alkaline Paint Strippers or Solvents	FILANO PAINT STAR
Graffiti		
Dirty Grout Lines	Alkaline Cleaners	FUGANET
Bitumen	Solvents	FILACLEANER
Candle Wax		
Routine Maintenance	Neutral Cleaners	FILACLEANER
Scratch Remover Wax	Alkaline Stain-Removers or Solvents	FILASOLV - FILAZERO SIL

For details on where to purchase the products listed above, please contact Designer Surfaces via email bdm@designersurfaces.net.au